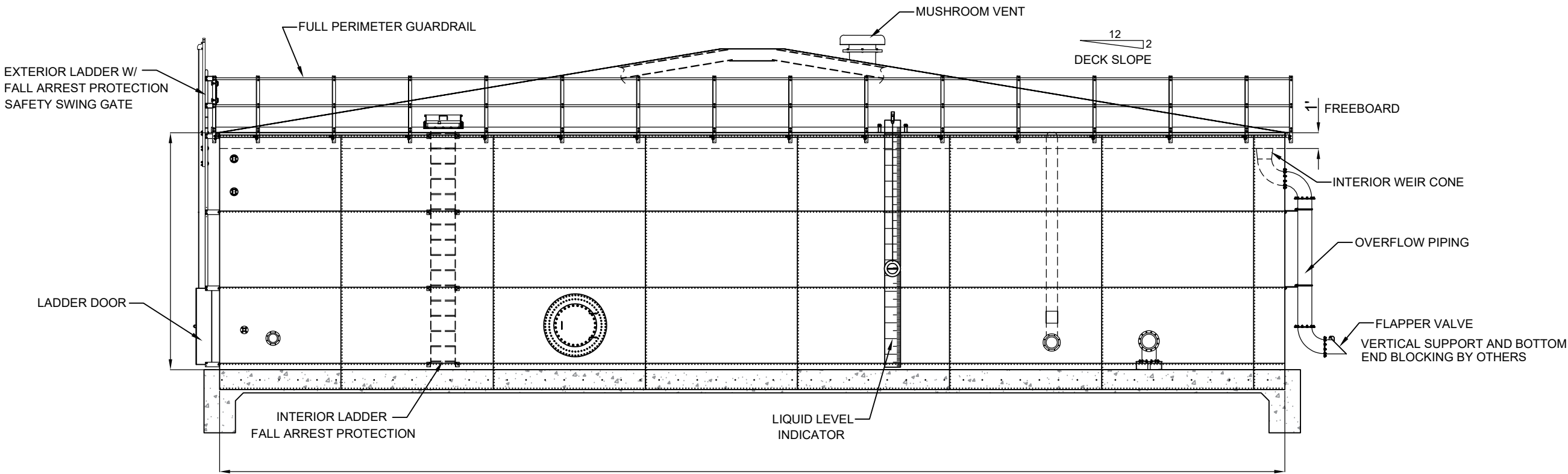


Factory Coated Bolted Steel Tank Preliminary Submittal

NOT APPROVED FOR CONSTRUCTION



ELEVATION VIEW



182 S. County Rd 900 E.
Avon, Indiana 46234
PH- 317.271.7002 FAX-317.273.1154

JOB. No.	-
Dwg. No.	S-1

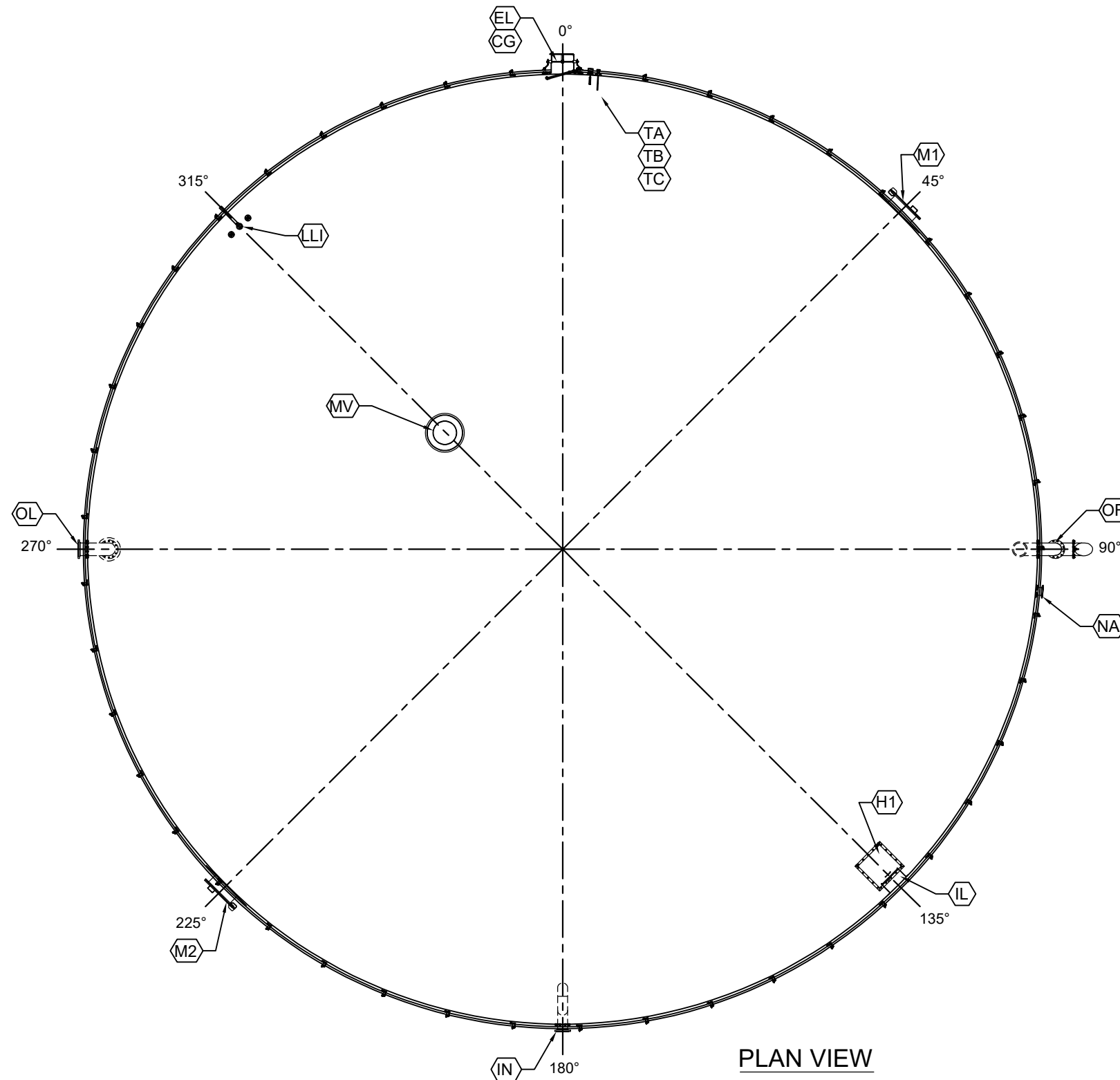
BOLTED TANK STANDARDS
PRELIMINARY DRAWINGS

Engineer: XX	Drawn By: RS	Checked By: XX	Date: 09/18
--------------	--------------	----------------	-------------

E	⬠	Ⓢ	Ⓟ	Ⓐ
Rev. By	Rev. Date	Rev. By	Rev. Date	Rev. By

Revision Description

NOT APPROVED FOR CONSTRUCTION

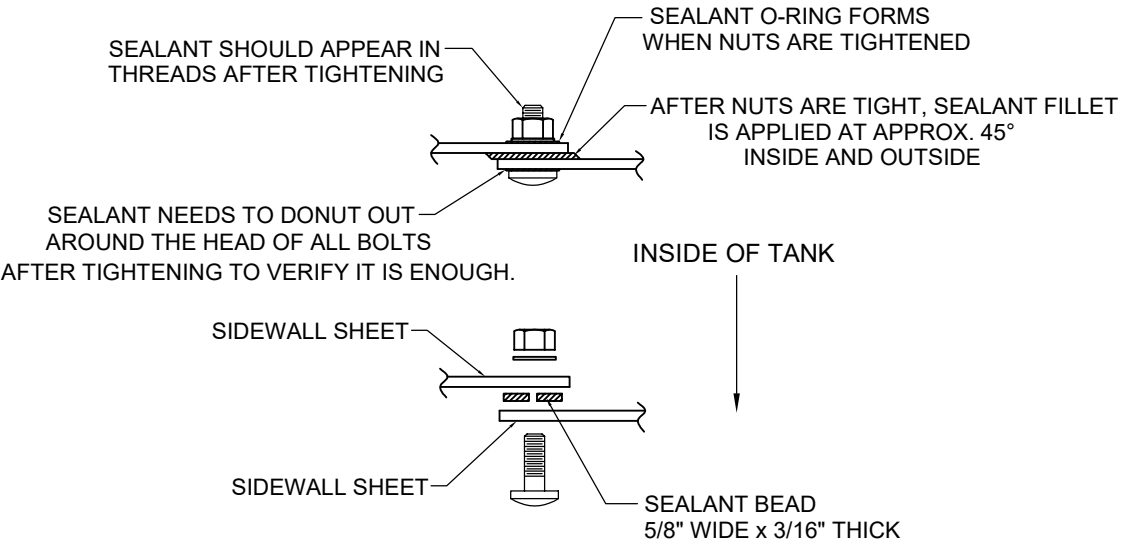
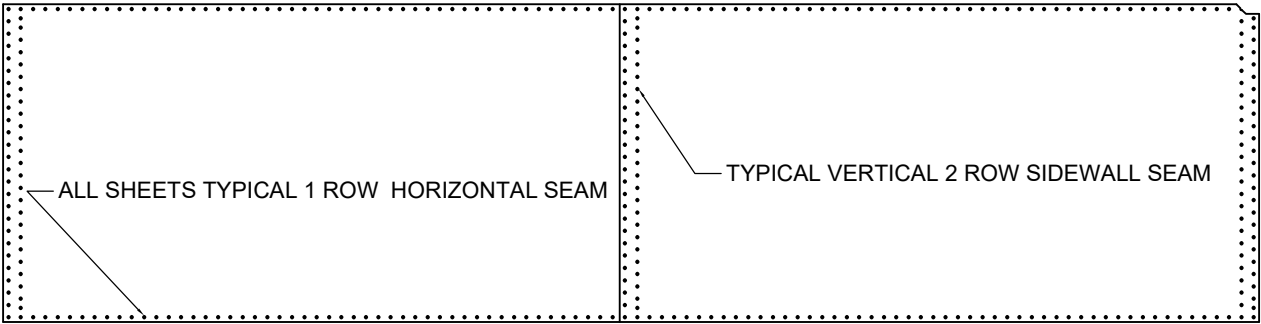
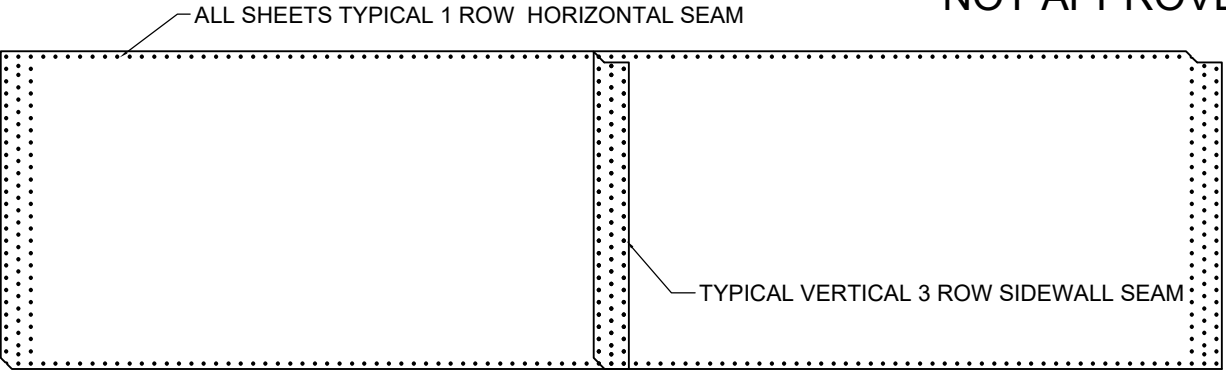


APPURTENANCES			
ITEM	SIZE	DESCRIPTION	ORIENTATION
		LADDERS & GUARDRAIL	
EL		STANDARD EXTERIOR LADDER W/ FALL PREVENTION	0°
CG		STANDARD COMPLETE PERIMETER GUARDRAIL	0°
L		STANDARD INTERIOR LADDER W/ FALL PREVENTION	135°
		DECK APPURTENANCES	
LLI		LIQUID LEVEL INDICATOR GAUGE BOARD	315°
MV	20"	ALUMINUM HOOD MUSHROOM VENT	CENTER
H1	24" x 24"	SQUARE HATCH - TANK ACCESS	135°
		SIDEWALL APPURTENANCES	
M1	24"	ROUND MANWAY - TANK ACCESS	45°
M2	24"	ROUND MANWAY - TANK ACCESS	225°
OL	10"	150# NOZZLE W/ ANTI- VORTEX - OUTLET	270°
N	8"	150# NOZZLE W/ INTERIOR PIPING - INLET	180°
OF	10"	EXTERIOR PIPE W/ WEIR CONE - OVERFLOW	90°
NA	6"	150# NOZZLE	95°
TA	1"	HALF COUPLER - HIGH LEVEL SWITCH	5°
TB	1"	HALF COUPLER - LOW LEVEL SWITCH	5°
TC	1"	HALF COUPLER - TEMP SWITCH	5°
GP	2" x 5" x 4"	(2) GROUNDING LUGS	FIELD

[illegible]

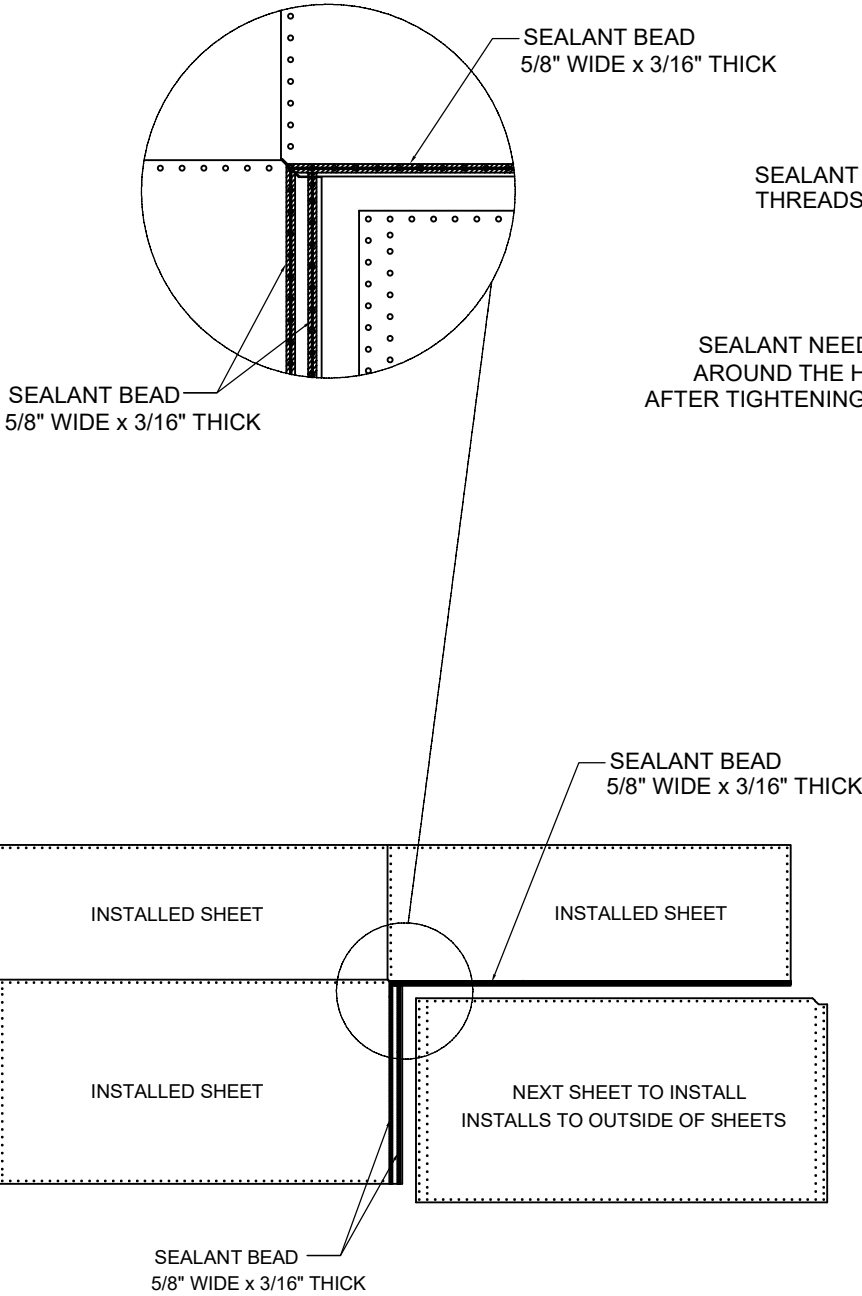
Factory Coated Bolted Steel Tank Preliminary Submittal

NOT APPROVED FOR CONSTRUCTION



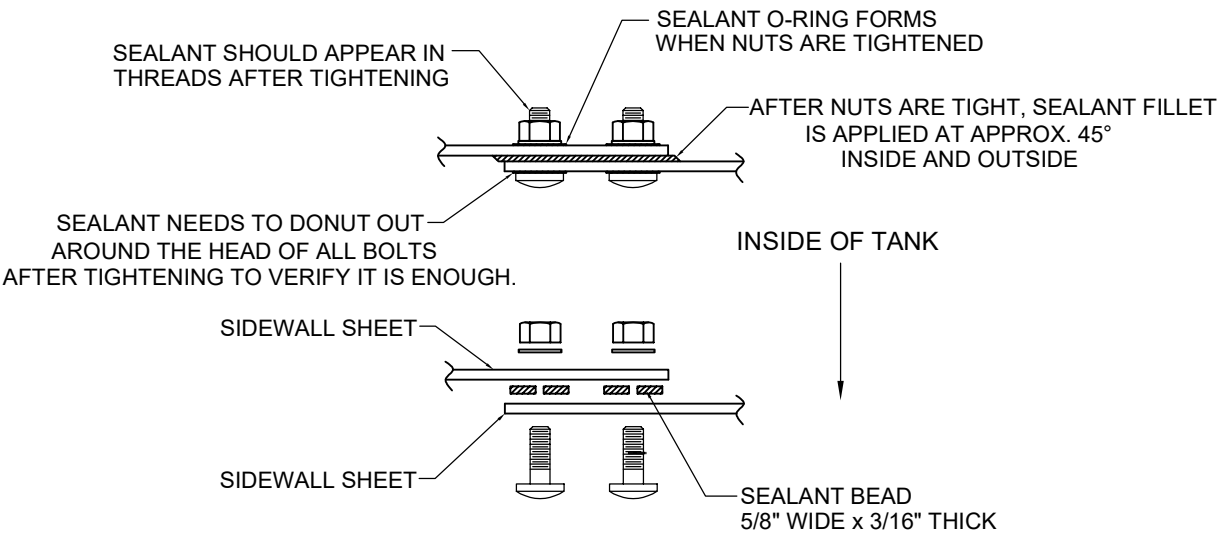
VERTICAL & HORIZONTAL SIDEWALL CONNECTION

SIDEWALLS TO HAVE 1/2" Ø POLYCAP JS1000 GRADE 8 BOLT-
WITH 1/2" HEX NUT AND 1/2" FLAT WASHER
ALL TANK HARDWARE TO BE TORQUED TO 45 FT/LBS



TYPICAL SIDEWALL CONNECTION

INSTALLATION PROCEDURE WHEN TANK
IS ERECTED WITH JACKING SYSTEM
VIEW FROM OUTSIDE OF TANK



VERTICAL SIDEWALL CONNECTION

2 ROW VERTICAL CONNECTION SHOWN
NUMBER OF ROWS RANGE FROM 1 ROW TO 5 ROW



182 S. County Rd 900 E.
Avon, Indiana 46234
PH- 317.271.7002 FAX-317.273.1154

JOB. No.
-
Dwg. No.
S-3

BOLTED TANK STANDARDS
PRELIMINARY DRAWINGS

E

⬠

⊙

⊕

⊖

⊗

⊘

⊙

⊕

⊖

⊗

⊘

⊙

⊕

Revision Description

Rev. By Rev. Date

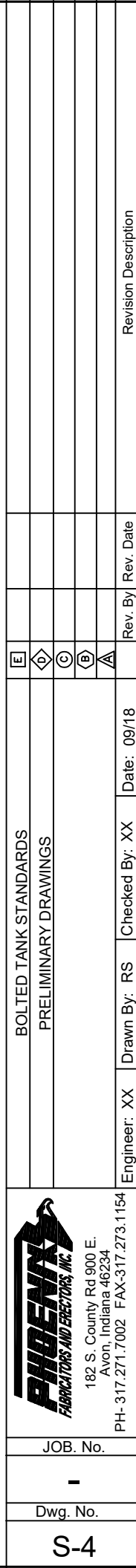
Date: 09/18

Checked By: XX

Drawn By: RS

Engineer: XX

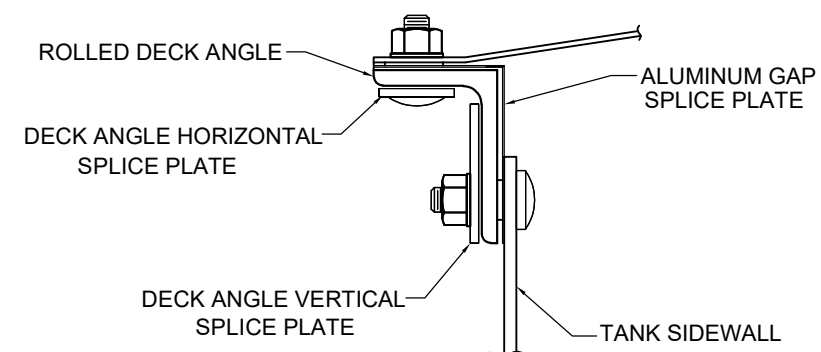
NOT APPROVED FOR CONSTRUCTION



24" ROUND MANWAY

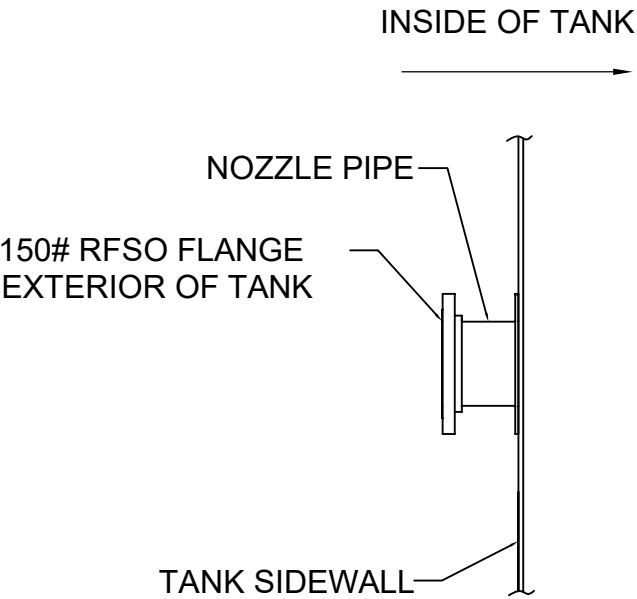
[illegible]

NOT APPROVED FOR CONSTRUCTION



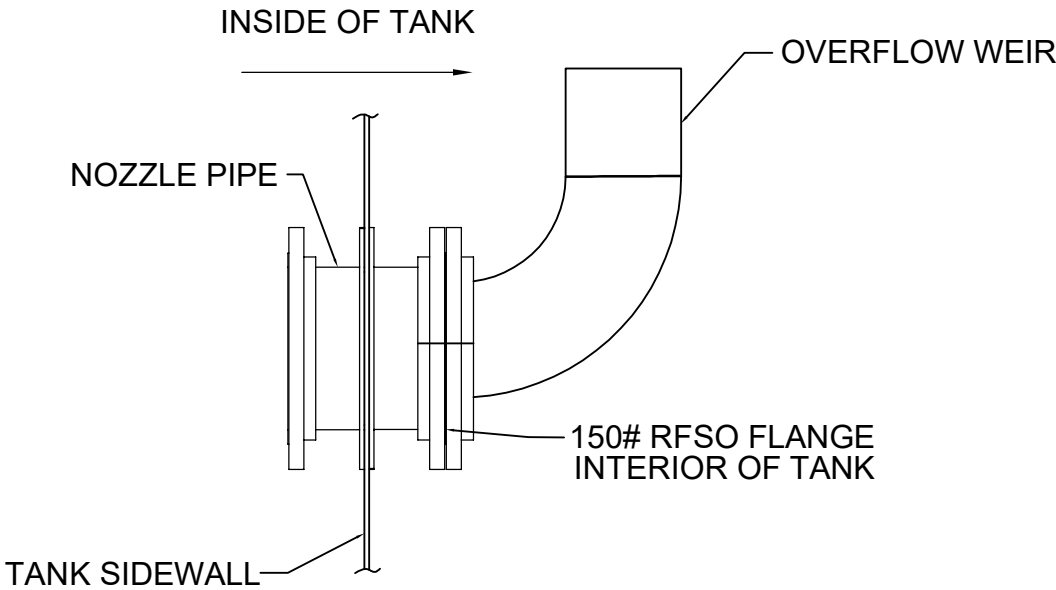
DECK, SIDEWALL AND SPLICE PLATES

 PHOENIX FABRICATORS AND ERECTORS, INC. 182 S. County Rd 900 E. Avon, Indiana 46234 PH-317.271.7002 FAX-317.273.1154	JOB. No.								
	Dwg. No.		-						
	S-6								
BOLTED TANK STANDARDS			E						
PRELIMINARY DRAWINGS			D						
			C						
			B						
			A						
Engineer: XX	Drawn By: RS	Checked By: XX	Date: 09/18	Rev. By	Rev. Date	Revision Description			



150# NOZZLE SINGLE

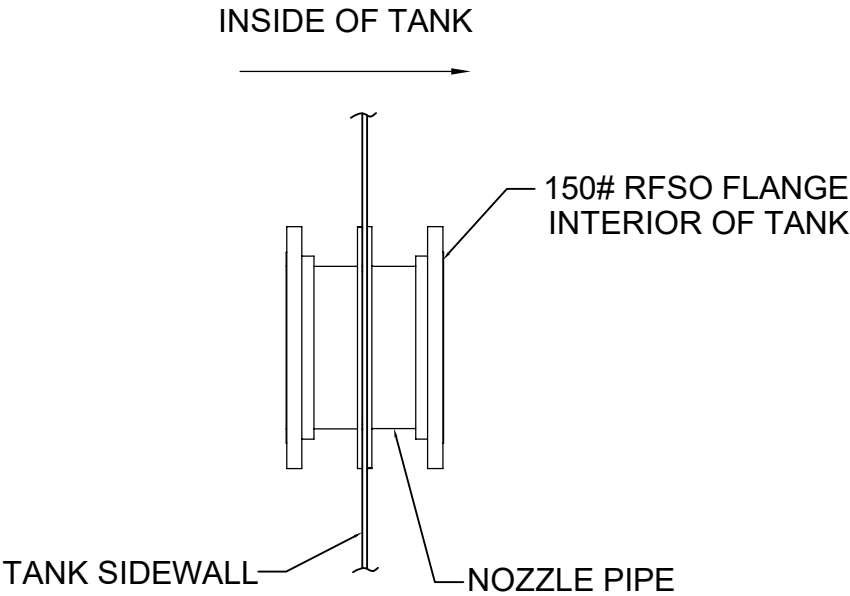
CARBON STEEL NOZZLE
150# RFSO ANSI / ASME B16.5 FLANGE FACE
SCHEDULE 40 PIPE
BACKING FLANGE 150# BOLT PATTERN
1/2" POLYCAP BOLTS IN SIDEWALL



150# DOUBLE NOZZLE OVERFLOW

EPOXY COATED CARBON STEEL NOZZLE
150# RFSO ANSI / ASME B16.5 FLANGE FACE
SCHEDULE 40 PIPE
BACKING FLANGE 150# BOLT PATTERN
1/2" POLYCAP BOLTS IN SIDEWALL

Factory Coated Bolted Steel Tank Preliminary Submittal
NOT APPROVED FOR CONSTRUCTION



150# DOUBLE NOZZLE

EPOXY COATED CARBON STEEL NOZZLE
150# RFSO ANSI / ASME B16.5 FLANGE FACE
SCHEDULE 40 PIPE
BACKING FLANGE 150# BOLT PATTERN
1/2" POLYCAP BOLTS IN SIDEWALL



182 S. County Rd 900 E.
Avon, Indiana 46234
PH- 317.271.7002 FAX-317.273.1154

JOB. No.
-
Dwg. No.
S-7

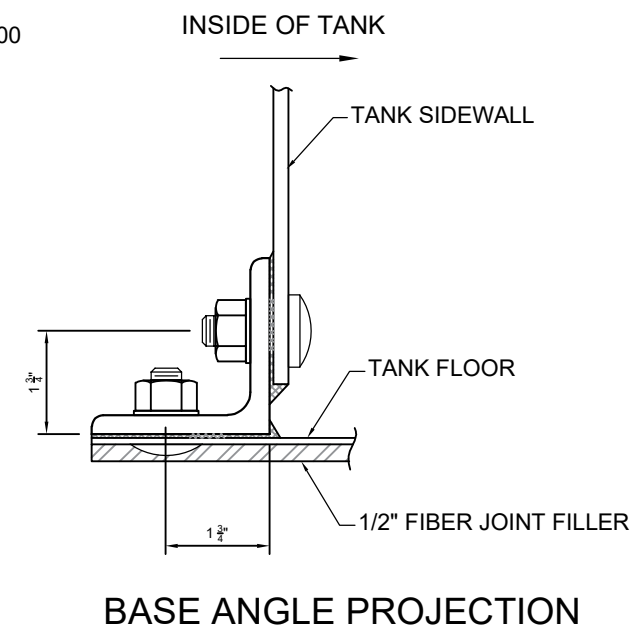
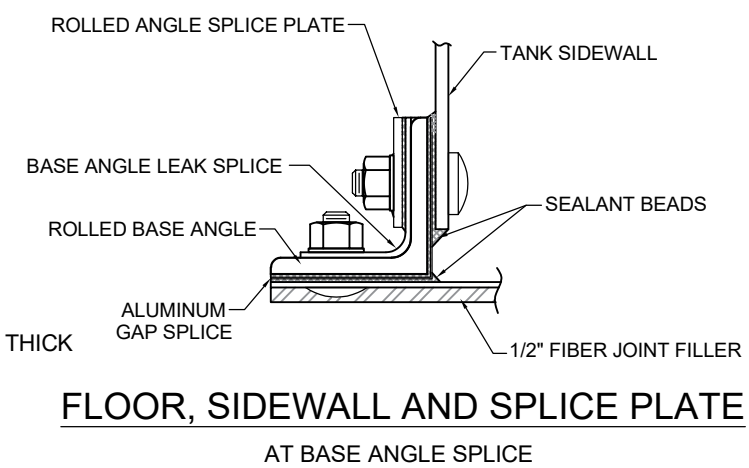
BOLTED TANK STANDARDS PRELIMINARY DRAWINGS		Engineer: XX	Drawn By: RS	Checked By: XX	Date: 09/18	Rev. By	Rev. Date	Revision Description


NOT APPROVED FOR CONSTRUCTION



<div><p>PHOENIX FABRICATORS AND ERECTORS, INC. 182 S. County Rd 900 E. Avon, Indiana 46234 PH-317.271.7002 FAX-317.273.1154</p></div>	JOB. No.											
	-											
	Dwg. No.											
	S-8											
				BOLTED TANK STANDARDS			E					
				PRELIMINARY DRAWINGS			◊					
							C					
							B					
							A					
				Engineer: XX	Drawn By: RS	Checked By: XX	Date: 09/18	Rev. By	Rev. Date	Revision Description		

NOT APPROVED FOR CONSTRUCTION



S-9	Dwg. No.	-	JOB. No.	 PHOENIX FABRICATORS AND ERECTORS, INC. 182 S. County Rd 900 E. Avon, Indiana 46234 PH-317.271.7002 FAX-317.273.1154
	Engineer: XX	Drawn By: RS	Checked By: XX	
	Date: 09/18			
BOLTED TANK STANDARDS	[E]			
PRELIMINARY DRAWINGS	[D]			
	[C]			
	[B]			
	[A]			
	Rev. By	Rev. Date	Revision Description	